



Mike Ayres Design

Sensory Resources



Multi Sensory Spaces



For all order enquiries please
email admin@medix21.co.nz or
Tel 04 233 1627

Exclusive to:
Medix21
29 Jarden Mile
Ngauranga 6035
Wellington



MEDIX21™
HELPING YOU MOVE AHEAD

Multi-Sensory Rooms



Multi-Sensory Rooms evolved from the Dutch concept of Snoezelen in the 1980s.

Specifically designed to enable people to enjoy a wide range of experiences for therapy, learning, stimulation, relaxation and fun, Mike Ayres Design has pioneered the design and use of Multi-Sensory Rooms ever since.

The concept is to create events focussed on particular senses such as feel, vision, sound, smell and taste as well as the more abstract senses of wellbeing, space, time, togetherness and many more.

A Multi-Sensory Room is a special place where the participant feels entirely at ease and able to initiate and control effects and the experience created. This is achieved in a host of different ways; through special sound and visual effects, tactile experience, vibration, use of aroma and music either independently or in combination.

Participants can achieve a liberating sense of control, often for the first time in their lives, and this empowerment offers huge opportunities for learning, relaxation and communication.

The use of multi-sensory practice continues to evolve and reach new audiences with every passing year. Successfully implemented in both mainstream and special educational settings, Sensory Rooms are now a trusted resource for residential and dementia care as well as private, community and respite projects.

Irrespective of the aim or audience, it is important to approach the project logically and with care to ensure a considered, appropriate, effective environment is designed and built.

Partnership with Mike Ayres Design offers you the certainty of experience and authority and the flexibility to design and manufacture an environment to meet and exceed your aspirations. Not your budget.

Mike Ayres Design

Architectural building advice

The most productive environments are achieved through careful consideration of the structure and space itself at the earliest opportunity. Mike Ayres Design is experienced in advising Architects and Project teams on how best to prepare the space in a new build or refurbishment project to ensure the optimum result from your investment.

Design

Prioritising design is vital to the success of your room. It is important to distinguish between design and the 'layout' of equipment. Design embraces much more than simply locating equipment in a space; at Mike Ayres Design it informs every conversation, product and placement and is based on a deep understanding of what 'works'. This professional design service is absorbed into the project for most Multi-Sensory rooms, more complex projects could incur specific consultation costs but this is rare and always discussed with you.

Finance

Mike Ayres Design is happy to design projects on a staged development basis to facilitate easier, long term financial planning for you.

Manufacture

A key advantage of partnership with Mike Ayres Design is the assurance of quality. The vast majority of our range is designed and manufactured in our own workshops to an unparalleled standard. The remaining products are either manufactured exclusively for us by partners or carefully chosen to compliment our own range by our experienced team. Safety, function and quality are central to everything we produce and supply and we refuse to compromise on production or installation.

Installation

Our own experienced installation teams are all DBS checked and have the relevant qualifications to ensure an outstanding outcome. Every Mike Ayres Design installation is to the highest safety standards and conforms to all current safety regulations. All of our teams take pride in the functionality and detail of our installations and understand the importance of details and an aesthetic 'finish'.

Guarantee

All products and installations offer the assurance of a 12-month guarantee and further support is available through our range of maintenance services.

Service and maintenance

Mike Ayres Design employs experienced maintenance staff to provide on-going service, either on request or under an agreed contract. This usually involves a six monthly or annual visit.

Training

Once installed, your sensory environment can only fulfil its potential if everyone is confident using the equipment. Training is essential to achieve this.

Familiarisation training is provided on every environment, our experienced installation teams providing a basic introduction to the environment and its functions. Mike Ayres Design offers more comprehensive options in partnership with Hirstwood Training (see page 194) including In-Set days tailored to your needs. We recommend an on-going programme to keep you and your team refreshed and engaged with the sensory possibilities within the room.





Sensory Studio® A space of infinite possibility.

Tailor your sessions to be truly immersive or simply focus on a specific sense or single objective.

This is a concept originated by Mike Ayres, which has evolved out of the use of Snoezelen, multi-sensory rooms and interactive light and dark rooms. Sensory Studios® are now included in many mainstream schools as well as schools for pupils with special and additional needs. They have been developed to meet the demand for more flexible spaces which enable the users to create whatever type of environment or mood they wish, either temporary or permanent.

The Sensory Studio® allows appropriate interactivity by people of all cognitive and physical abilities. They are used for curriculum work at all levels, drama and creative arts, as themed environments, for communication and pastoral work, as well as for specific therapy and assessment.

The Sensory Studio® can be a relaxing and fun environment to explore and experiment in. It encompasses all of the possibilities that current technologies offer, an environment in which you can experiment with and exploit lots of physical materials and low-tech experiences.

Most importantly, Sensory Studio® control systems allow the user to have complete control of their environment and all of the equipment in it... very simply.

The Sensory Studio® can be controlled in a number of ways at any time:

- Manually, by direct interaction with equipment, or by plugging in Switches.
- Radio remotely, switching and interacting with equipment wirelessly via Transmitters
- With an iPad, using our revolutionary 'Switch4' iPad app.
- With dynamic interactive projection (for some elements of the Studio)

Sensory Studio® is a trademark registered by Mike Ayres Design.

The basic elements of a Sensory Studio® are:

A flexible shell, open space or blank canvas that can be reshaped with equipment and effects to create or influence whatever mood, experience, theme or scenario for group or individual use is required, and change it as the theme develops.

A flexible and easy-to-use control system which can be used by anyone, anywhere, and which adapts as technology develops.

An environment which can grow and change as individual needs evolve and to incorporate new equipment and ideas.

A space in which to exploit the use of new technology, such as games consoles, iPads and other tablets.

Adequate storage and shelving.

Easy access for setting up and maintenance.

Plenty of low-tech materials and disposal elements to use and experiment with.

The typical uses of a Sensory Studio® are:

Drama, create stage sets and changing scenes, for audience participation. It allows complete integration of mainstream and special needs curriculum work.

Theme work, creating any sort of scene, such as seasons, travel, space, curriculum topics and dramatic events in which participants can interact at their level of functioning or skill.

Individual choice and control, enables anyone of any ability to select and control their environment, express likes and dislikes, understand freedom of choice and learn skills for independence and inclusion.

Learning specific skills, such as cause and effect, visual tracking, listening and communication and all the skills needed for learning.

Curriculum work across a broad spectrum of subjects, for example; science, maths, literacy, drama, physical education, history and social sciences. The Sensory Studio® enhances opportunities for mainstream students too, enabling everyone to participate on equal terms.

To arrange a visit to discuss your studio project, call us on 01359 251 551 or email, enquiries@mikeayresdesign.co.uk



Sensory Space System™



If you cannot find an appropriate space to make a Sensory room, the Sensory Space System™ is one way of creating a dedicated space within any classroom or communal area. You can create a haven of tranquility within the cluttered classroom, a dark space in a bright area or a themed grotto within a larger environment.

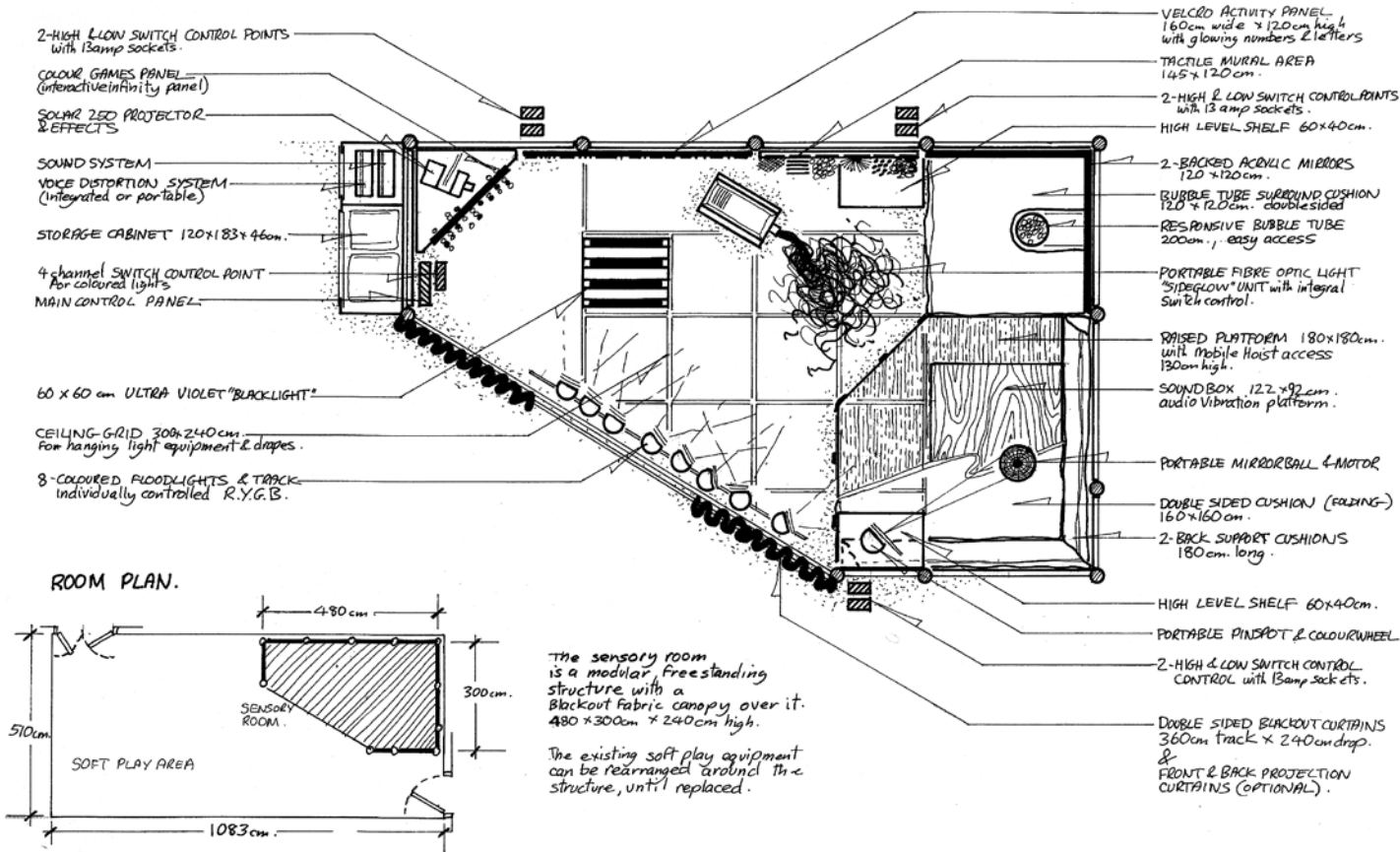
The Sensory Space System™



- Constructed within a few hours
- Completely self supporting
- Made to any size and height to suit the available space
 - Length and width in multiples of 60cm
 - Height between 190cm and 250cm
- Include an integral ceiling grid to hang mobiles and lights
- Available in a wide range of colours and surface types
- With or without blackout or projection curtains
- Provided as an empty shell or a fully fitted sensory space including:
 - power supply and sockets
 - Switch2 control system
 - appropriate sensory equipment from our extensive range

We provide a complete consultation, design, manufacture, installation, training and maintenance service.

Call 01359 251 551 or email enquiries@mikeayresdesign.co.uk for further details about this concept.



Sensory Screens



New Screens to create instant Sensory corners

Designed to be stable and robust, portable curved screens consist of brushed satin alloy frames with spreader feet and braked castors. In-filled with translucent opal acrylic sheet, ideal for projecting on to or through.

Position screens to create Sensory corners or Chill-out spaces within a larger space or simply connect together with Flexible Screen Connectors for a semi-permanent feature. Easy to store neatly when not in use.

Three curved Sensory Screens will make an effective Sensory corner and six screens will make a complete closed 'pod'.

Sizes:
127cm high x 133cm wide x 45cm deep.
157cm high x 133cm wide x 45cm deep.
187cm high x 133cm wide x 45cm deep.
Angle: 60 degrees x 132cm internal radius.
(6 screens make a complete circle with a 264cm internal diameter)

Code	Product	£ ex VAT	VAT Exempt
2530-170	Curved Sensory Screen 127cm high		
2530-270	Curved Sensory Screen 157cm high		
2530-370	Curved Sensory Screen 187cm high		
2530-100	Flexible Screen Connector		



Sensory Pools

Mike Ayres Design



Being in water is one of the most all encompassing multi-sensory activities any of us experience.

It provides freedom of movement unachievable on 'land'.

Mike Ayres Design believe any sensory equipment within a hydrotherapy or leisure pool should be used to compliment, not replace, the experience of being in the water and use visual and lighting effects to create additional atmosphere for your session.

Most in-water experiences need to be designed in to the pool structure when it is being built and Mike Ayres Design frequently work with clients and pool designers to achieve this.

However, a lot of features can still be added to an existing pool area and many of these can be controlled by an iPad via the Switch4 control App.

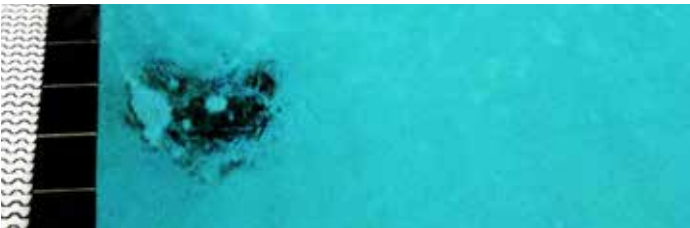
Naturally, our products and services conform to the strict regulations associated with pool areas and we are happy to discuss your aspirations with you.

For further no-obligation advice and information please call the Mike Ayres Design team on 01359 251 551 or email enquiries@mikeayresdesign.co.uk



Shower Cloud

A giant 150cm diameter cloud shaped shower head that pours rain down into the pool.



Bubble Creator

A large upside down saucer shaped disc that sits anywhere on the bottom of the pool and creates a large stream of fine bubbles.



Switch4 LED Colourchange Lights

A large keyboard within the pool hall enables you to change the colour of the whole space instantly. You can also have a wonderful moving rainbow effect with speed and direction control.



Lighting Rig

All equipment must be over the dry deck and always be at high level, where it cannot be reached by anyone using the pool. It will be subject to chemical onslaught from the pool filtration system and humidity. We will discuss all of the implications of this and the regulations and how all this will impact upon the equipment that you can include in your sensory pool.



Play Hose

A fun and inexpensive alternative to a water canon, rain shower, and whatever else you want it to be. The hose must be connected to the pool water filter system.



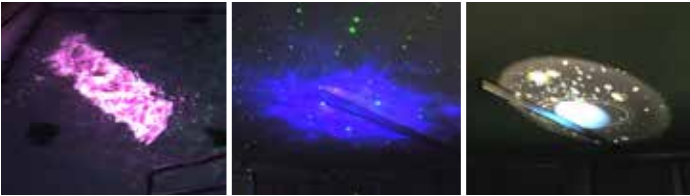
Control and Storage

If space allows, we can build a special projection cabinet, and localised control via large keyboards within the pool hall. The control cabinet will be within a dry area of the complex.



Multi-media Projection and Sound System

Projectors are housed in a dry-air cabinet to ensure the longevity of your investment. For maximum impact, the projected image begins at the water level to provide a sense of connection between the experiences. Use your videos or slideshows to create the image and impact you want.



Projection

When you are in the pool you are often looking up at the ceiling space, we try to position projected images to make the most of this. Images and light within the pool need to be basic simple shapes.



iPad Control

Control all of the sensory equipment with an iPad via the Switch4 control app and access sound and video via iTunes and iMovie to enrich your sessions. Remember, add a waterproof cover and you could use the iPad as a controller in the water!



The sensory room that travels to you. Mike Ayres Design works in association with companies that specialise in vehicle conversions for specialist use and for people with disabilities. They can create sensory vans, buses and trailers. A completely mobile facility, a sensory vehicle can be parked and used straight away. It has inbuilt wheelchair and hoist access, air conditioning and a completely resourced sensory space within it.

Built to Mike Ayres Design's unrivalled standards.

The vehicle is ideal for working in rural areas, 'outreach' projects, urban areas without permanent premises, community-based schemes and for visiting people at home. It gives you 'sensory on your doorstep', reaches people who cannot get to a centre and offers a shared resource for a group of schools or centres.

Vehicle specification:

- A long wheelbase, high top commercial vehicle
- Typical overall length = 7.01m., width = 2.0m., height = 2.75m.
- Floor length = 4.56m.
- Wheelbase = 3.95m.
- Interior height = 2.1m.
- Manual or automated agile gearbox
- Air-conditioning
- Side sliding door
- Tailgate hoist and internal track hoist to suit your specifications
- And lots more standard and optional features

The vehicle and specifications will change according to your needs and the models available.



The space can include:

- A completely integrated Switch2 and Switch4 iPad Control system, so that any type of switch can be used to access equipment
- Switch4 Interactive Bubble Tube with an easy access base
- Switch4 LED Colour Change Light system
- Folding soft cushions, with a sitting and laying area
- Opti Sensory LED Projector and a range of effect wheels
- Tactile Mural
- Ultraviolet 'Blacklight'
- Switch4 Interactive LED Fibre Optic Light Unit
- Sound system
- Storage space
- A range of switches and other small equipment

Each vehicle is like a room that is individually designed and made to suit your particular needs. We help you to define an exact brief, tailor the vehicle, install hoist access and design the interior to suit your needs. You choose the vehicle specifications, the sensory equipment, the layout of the space and any other options you want.

For further information, or to arrange a visit to discuss your project call Mike Ayres Design on 01359 251 551.

Or visit our website: www.mikeayresdesign.co.uk

